

SPREADER OPTION

CONTAINER/TWISTLOCK COUNTER



Revision date: 2020-06-26

BROMMA

PRODUCT INFORMATION

DESCRIPTION

The Container/Twistlock Counter maintains the correct service intervals for twistlocks and external containers to increase the spreader lifetime.

The Container Counter is connected to the twistlock locked/landed signal. When the twistlock locked/landed sensor gives a positive and a negative pulse, the counter will increase by count of one. The counter cannot be reset. When it reaches its maximum count (9999999 pulses) it will restart from 0.

The Twistlock Counter is connected to the twistlock locked signal. When the twistlock locked sensors give a positive and a negative pulse, the counter will increase by count of one. The counter cannot be reset. When it reaches its maximum count (9999999 pulses) it will restart from 0.

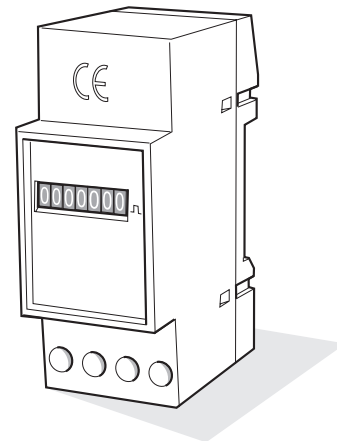
Spreaders equipped with SCU include software based on the Container/Twistlock Counter, as standard. This PI Sheet describes the optional Container Counter that can be installed on any spreader, including the ones with built-in software counters.

APPLICATION

The Bromma Container/Twistlock Counter can be ordered with all Bromma spreaders, new orders as well as upgrades.

Spreaders will be delivered with a Container Counter when the Container/Twistlock Counter is ordered, unless it is specifically requested that a Twistlock Counter be delivered with the spreader.

Although spreaders with SCU come with the software Container Counter as standard inside the SCU, it is also possible to add an external Container/Twistlock Counter for such spreaders, provided such requirement has been specified separately.



TECHNICAL DATA - CONTAINER/TWISTLOCK COUNTER

Operating voltage	230 V AC / 50 Hz, or 115 V AC / 60 Hz, or 24 V DC
Voltage tolerance	±10 % (115 and 230 V versions only)
Power consumption	115 and 230 V version: <2 VA 24 V version: <1 VA
Protection (front)	IP 65 (screw IP 20)
Ambient temperature	-10 °C to +70 °C
Weight	Approximately 75 g
Front	35 x 45 mm
Digits	1.8 x 3.6 mm

ORDERING INFORMATION

		Part No.
Container Counter	115 V AC	70782
	230 V AC	70781
	115 V AC	76140



We reserve the right to change the design and technical data without prior notice.
© 2020 Bromma – All rights reserved.

sales@bromma.com
www.bromma.com