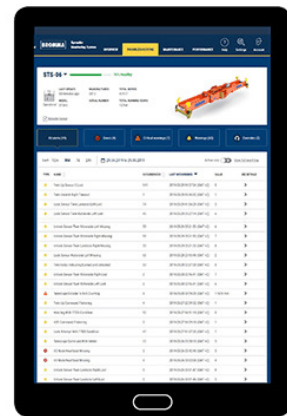
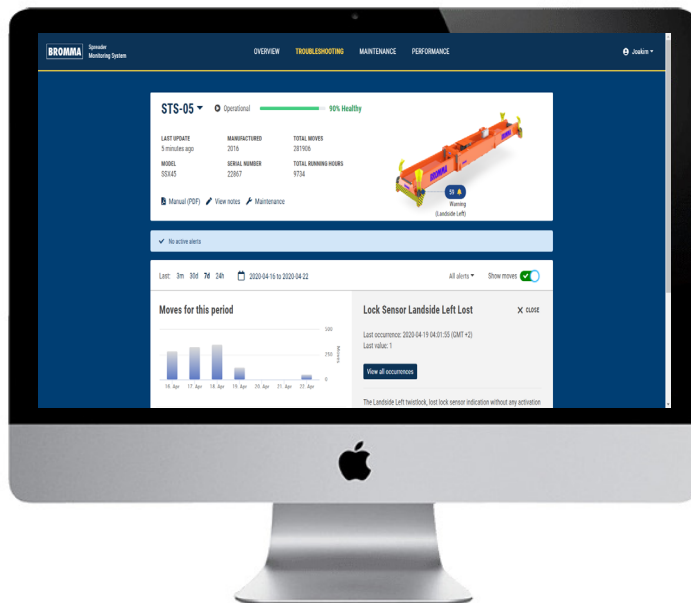


BROMMA SMS

SPREADER MONITORING SYSTEM



Bromma SMS is a real-time monitoring tool, which provides an instant view of the health of every spreader in fleet. It presents users with real time information of warnings and errors of the equipment together with recommended solutions to ensure swift issue resolution. It also contains a structured overview of planned maintenance and statistics on both fleet and individual spreader levels.



Real-time monitoring of each spreader in the fleet



Access to recommended solutions for over 800 maintenance issues



System is accessible through any modern web browser



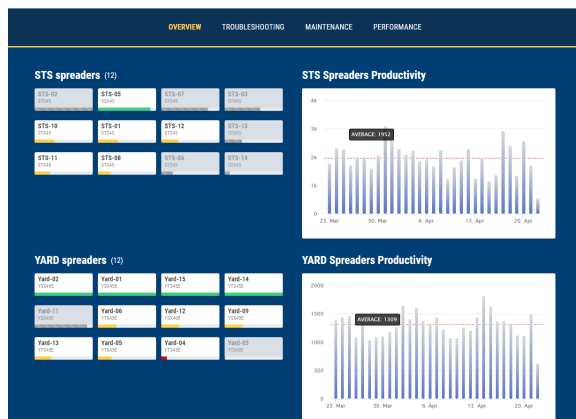
Overview of planned maintenance based on actual spreader utilization

BROMMA

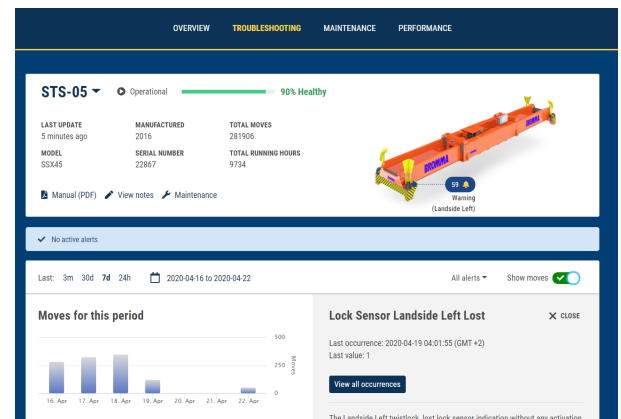
BROMMA SMS AT A GLANCE

Bromma Spreader Monitoring System allows you to make fact based decisions around the use of your spreader. With over 800 recommended solutions, it helps spreader owners to detect, understand, prevent and resolve potential spreader issues before they become real problems. Spreader information is transferred to Bromma SMS through the Bromma Telematics Unit which is fitted as a standard to all new Bromma spreader models or can be retrofitted to your existing spreaders.

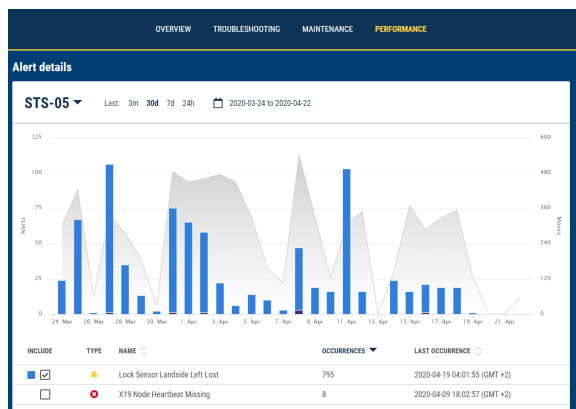
The insights delivered by Bromma SMS helps to shorten spreader downtime, prioritize maintenance needs and improve utilization and productivity at your terminal. As a subscription-based service, Bromma SMS provides terminal managers with the flexibility of using it when needed. The possibility to remotely monitor the spreader fleet also provides a safer working environment by increasing maintenance personnel's knowledge about spreader faults and removing them physically from possible dangerous situations.



Instant overview of the health of each individual spreader in the fleet. Spreader health is an aggregated KPI based on available IoT data and is represented by color coding, where green means a spreader with no or limited issues, yellow means that you need to pay attention and red means that the spreader requires immediate attention.

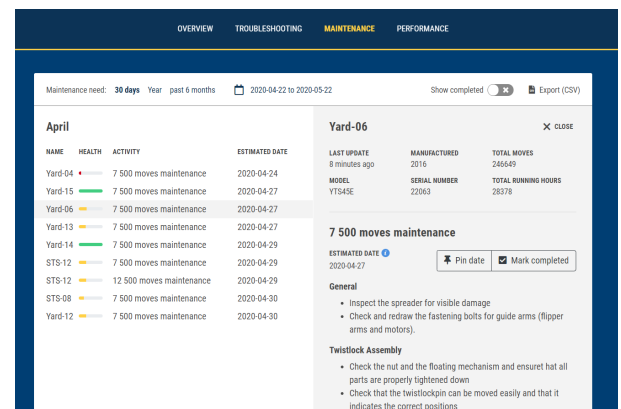


Easy access to recommended solutions and spreader manual. Recommended solutions are available for all issues detected, a spreader log book and the spreader manual are accessible with few



Manage and track the efficiency of your fleet.

Statistics for the whole fleet and individual spreaders, which allows more in-depth analysis on spreader performance.



Maintenance planning.

Full overview of planned maintenance, including utilization based scheduling, as well as the possibility to tailor maintenance to your terminal needs.

BROMMA

FUNCTIONALITY OVERVIEW

Functionality	Bromma SMS	Details
Spreader Control System	✓	SCS3, SCS4, SCU and Relay
Evaluation level	Whole fleet and individual spreader	Instant overview of the whole spreader fleet and each individual spreader's performance
Spreader Health Monitoring	✓	Remotely monitor spreader health and take action based on facts
Maintenance Planning	✓	Maintenance based on spreader utilization, including scheduling and possibility to customize
Recommended solutions	✓	Over 800+ recommended solutions to spreader issues to proactively decrease downtime
Fleet KPIs	✓	Spend more time on proactive fleet optimisation and less on reactive problem solving